

Hot Air Frame Warmer

Model NH-320

PSI's Hot Air Frame Warmer is ideal for any retail or wholesale lab. It offers a large heating rack and variable temperature adjustment. It is quick heating and will provide both hot and cold air.

Operating Instructions

1. Plug in unit
2. Press the "POWER/ON" switch to turn on non heated air flow.
3. Press "Heat/On" switch to start hot air flow.
4. Adjust temperature using the "Adjust" knob on the right side of machine.

CAUTION: When machine is in use, make sure the airflow is not obstructed so not to damage the heating elements.

Do not put frame warmer in damp or moist places.



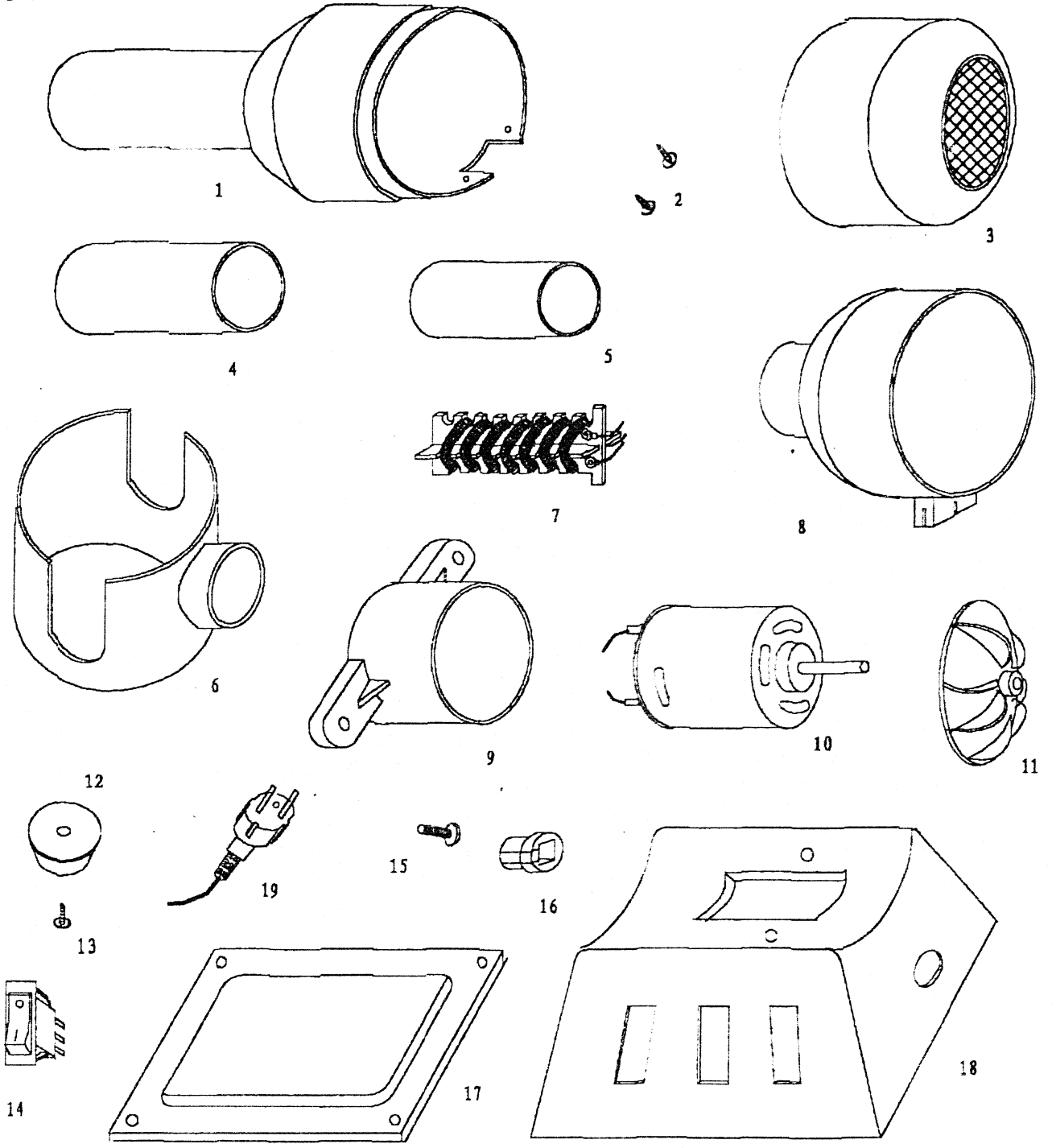
PRACTICAL SYSTEMS, INC.

11617 Prospect Road • Odessa, FL 33556
Phone (800) 237-8154 • (727) 376-7900
Fax (800) 330-3800 • (727) 372-1900

NH-320 Electronic Heater

Spare parts list

- 1. ventilating duct
- 2. screw
- 3. cover
- 4. sleeve
- 5. cover
- 6. pedestal
- 7. heating wire
- 8. inner sleeve
- 9. motor support
- 10. electric motor
- 11. impeller
- 12. rubber
- 13. screw
- 14. switch
- 15. screw
- 16. coil
- 17. bottom plate
- 18. bottom pedestal
- 19. plug



WSD CO; LTD